

125K-HI-RW-USB-D5

125K HID & EM4100 programmer with USB interface

USB driver installation guide for Windows OS

[1] install the following USB driver before connect the reader to PC

- Copy all files from CD to your local PC then run path: `\usb driver\SETUP.exe`

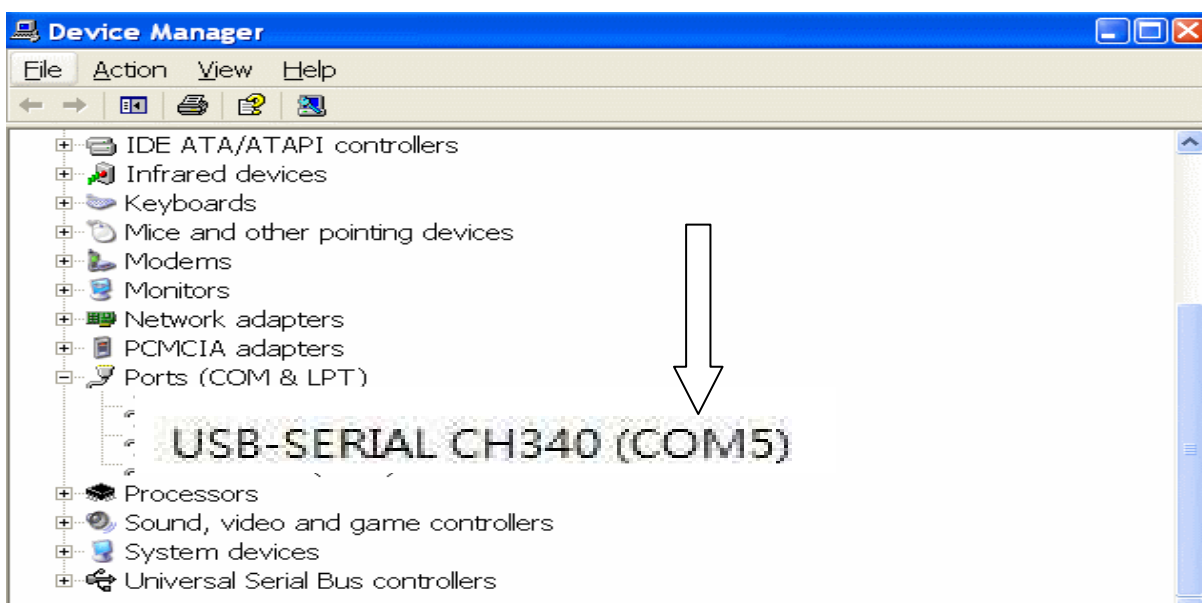


[2] after driver installation , connect the reader to PC through the USB cable

[3] it will detect and install the "USB to serial virtual com port" driver automatically

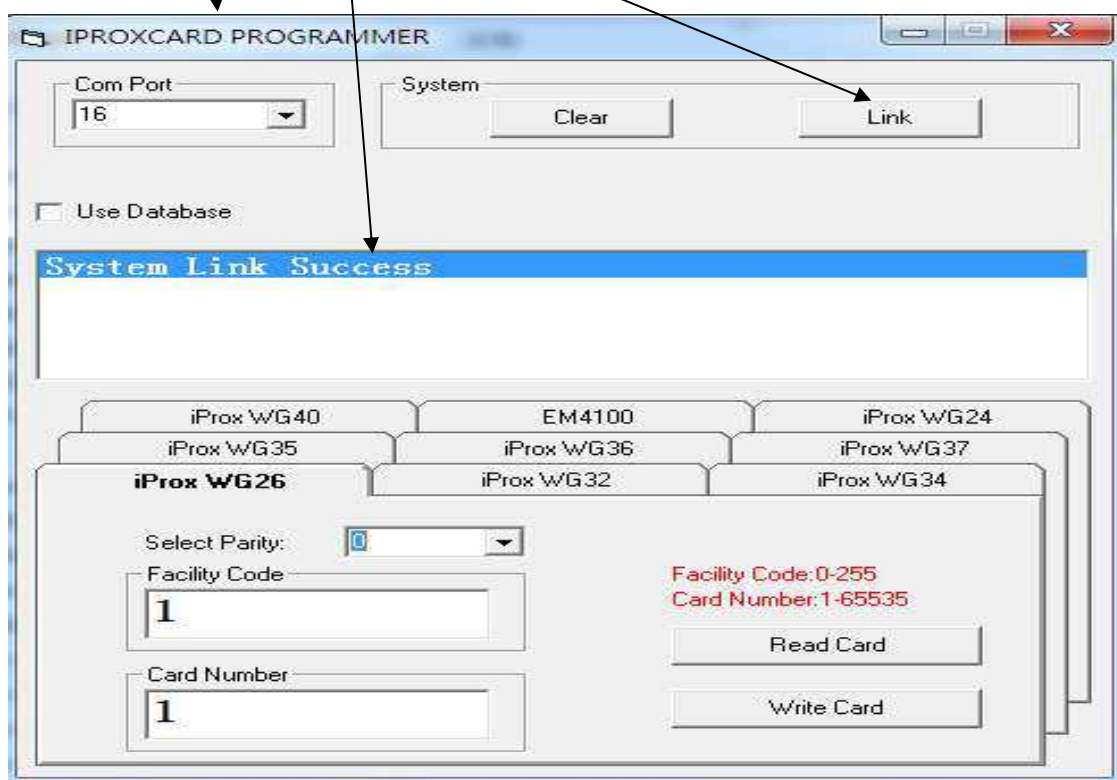
[4] a "virtual com port" will be found from the device manager as follow :

(Remarks : writer program can support com port number 1-16 only)



Program user guide – Set up communication

- [1] copy all files from the CD to your local PC
- [2] run the program from the path : \program\setup.exe
- [3] After installed the program successfully , run the program from the windows start menu or the program directory c:\Program Files\.....\RFCard.exe
- [4] select a suitable "Com Port" number.
- (remarks : writer program can support com port # 1-16 only)
- [5] click on "Link"
- [6] 'System Link Success' will be shown if successfully as follow



Remarks :

If found "System Link Fail" , check the com port number , re-plug the reader or restart the system

Menu Function

Com Port : select correct virtual com port number.

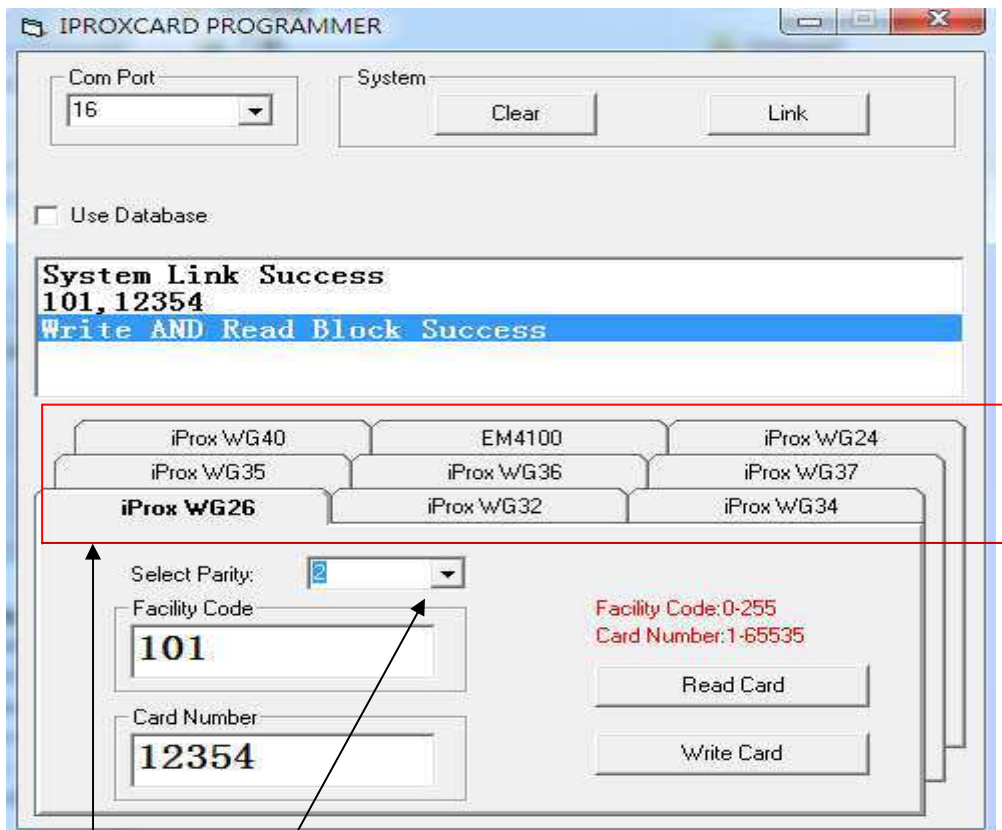
Link : connect with PC

Clear : clear message screen

Use Database : click to select - support .csv format for card programming

Format selection menu: to select difference card format for programming

Select wiegand format and parity bit



Select Wiegand format

This programmer can support difference wiegand format (24 ,26 , 32 , 34 ,35, 36 ,37 or 40 bit).

Select Parity

The ID sent out from HID original reader doesn't check any parity bit.

But some system integrator who install system for the end user normally add with parity in the access control system to make sure the end user have to buy the card from them.

So we need to understand which kind of parity in the existing access control system before programming.

How to verify the wiegand format and parity bit from the existing HID card

If you need to duplicate your existing HID card but don't know which wiegand format and parity bit is using .

You need select the difference wiegand format and parity bit for testing one by one as follow steps.

[1] run the program and click "Link" to make the communication between the reader and computer

[2] Place the existing HID card on the reader .

[3] Select wiegand 26 bit and parity bit "0" to read the card.

[4] If fail to read , select wiegand 26 bit with Parity bit 0,1 ,2 , 3 & 4 for testing one by one.

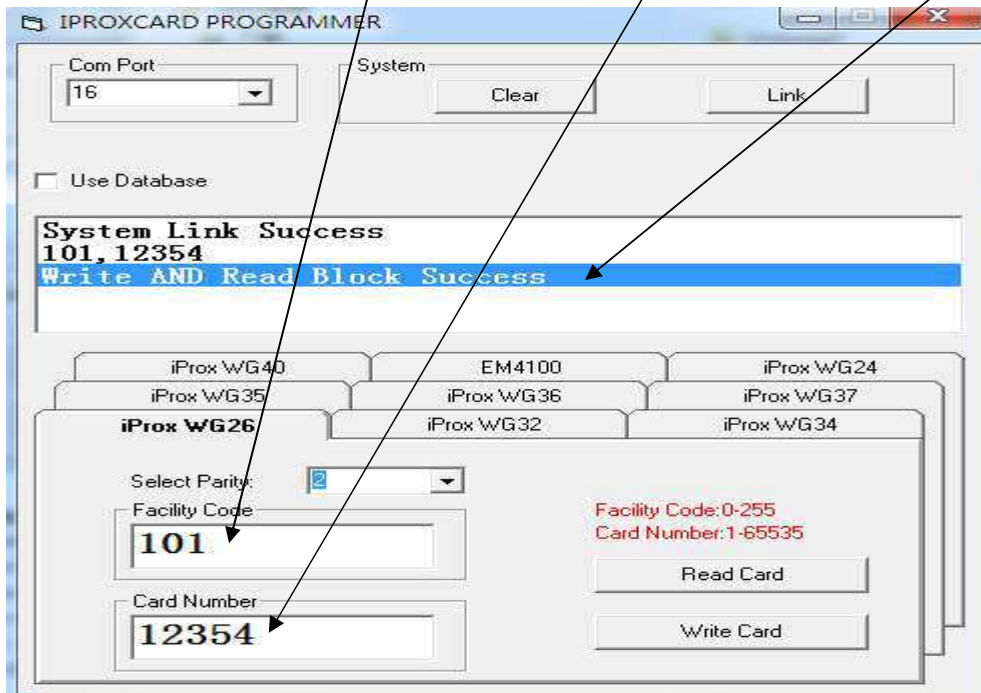
[5] If still fail to read , the card may not be with wiegand 26 bit format .

Then need select another wiegand format e.g. 34 bit with Parity bit 0,1 ,2 ,3 & 4 for testing one by one until find out a correct setting for the card .

How to program to a HID proxdata format with Wiegand 26bit & parity bit '4'

Step

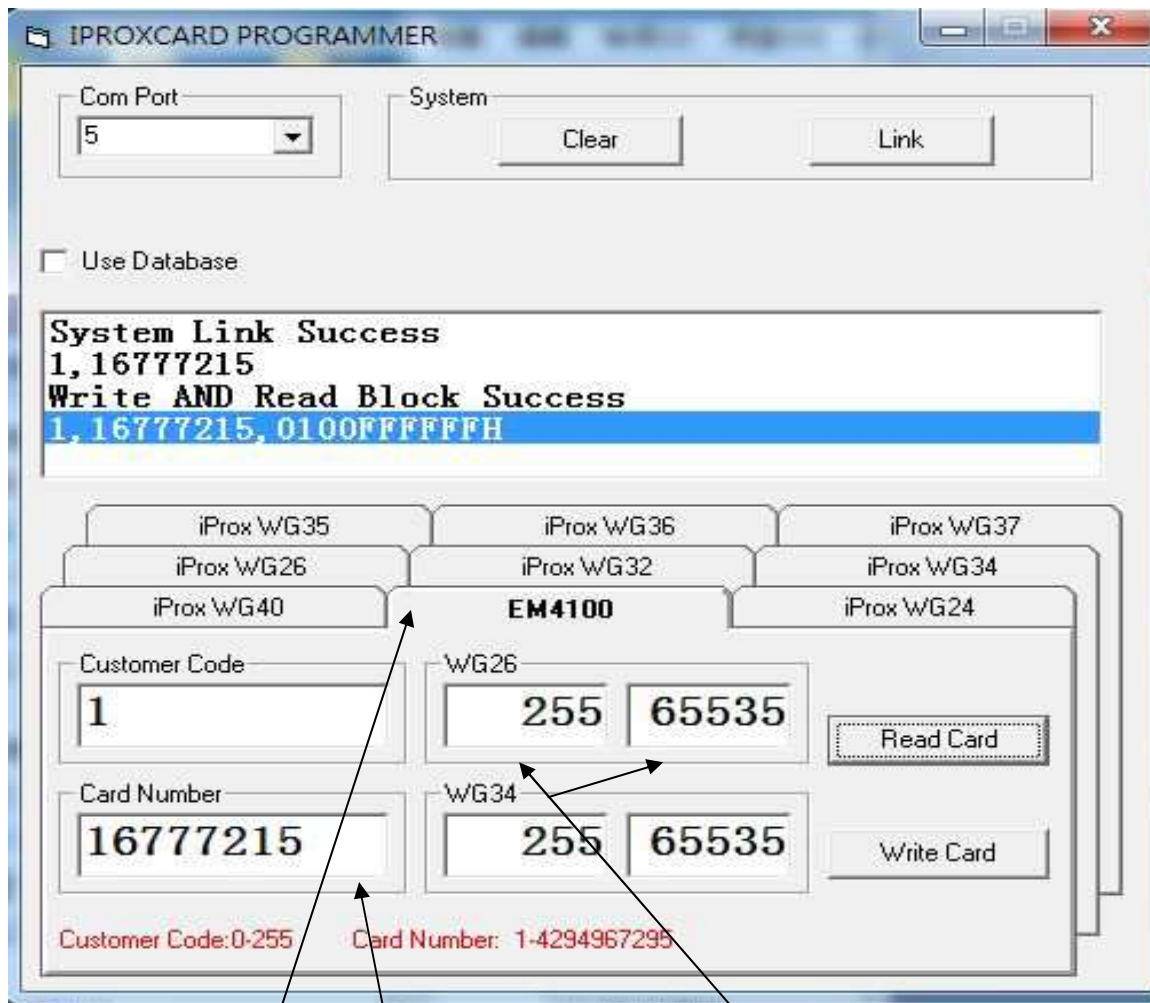
- [1] Select 'HID WG26' format and parity "4"
- [2] Input Facility Code (e.g. '101') and card number (e.g. '12354')
- [3] Place a "R/W card" on the reader
- [4] click 'Write Card' , wait ~1-2 seconds until beep and show "write And Read Block Success" here.
- [5] The HID W26 format card number has been already programmed into the card successfully



Remarks :

- [1] If found "Read/Write Block Data fail" error message , pls hold the card on hand and keep ~ (5-10)mm distance from the reader for read / write operation again
Sometime different tags have to rotate to different positions to get the best read/write performance
- [2] connect the reader with computer's USB port directly , not through a USB hub .
- [3] The next card number to be programmed will be added 1 automatically .
If you need program the card with another new number , need re-entry a new card number for programming.
- [4] The facility code range and the card number range will be changed depend on the difference format selection . Pls input the correct range according to the instruction.
- [5] This device can support several wiegand format (e.g. WG24, 26 ,34 , 35 , 36 , 37 & 40 bit etc..) .
But we can't sure the programmed card can be read by all the HID readers in the market .
If you found the card can't be read by your reader after programming , pls feel free to contact us and let us know the detail.
- [6] R/W card includes HI-RW-T1(ISO Card) , HI-RW-T2(clamshell card) and HI-RW-T5(Keyfob)

How to program a EM4100 / WG26 format card



Step :

- [1] Select 'EM4100' format
- [2] Input card number 1-16777215 or WG26 - Facility Code (0-255) and card number (1-65535)
- [3] Place a R/W tag on the reader
- [4] Then click 'Write Card' , the windows message will show 'Write AND Read Block Success' .
- [5] The EM ID card number has been already programmed into the card successfully

Remarks :

- [1] The next card number to be programmed will be added 1 automatically .
- [2] support WG26 format only (Facility Code (0-255) and card number (1-65535))
- [3] support decimal card number range (1-16777215)

Reader antenna location and detection area

The internal reader antenna is located at the lower side of the reader as follow :



If fail to read , pls check and try the following steps to solve the problem:

- [1] make sure the tag is placed within the detection area.
- [2] rotate , shift a little bit or flip the card for read/write operation
- [3] hold the card on hand and keep ~5mm reading distance for read/write operation.



shift left or right a little bit



shift left or right a little bit



Hold card on hand and keep ~5mm to read



Tag need within the detection area

Remarks : Some slim size keyfob may not be read as the antenna size is too small.

If you knew its ID number, you can write it to a HID R/W keyfob directly using the writer program for programming